

The Cloverlea



ground floor

Area analysis	m ²	sq
Ground floor	211.19	22.73
First floor	33.48	3.60
Garage	36.14	3.89
Alfresco	13.96	1.50
Verandah 1	3.90	0.42
Verandah 2	3.90	0.42
TOTAL AREA	302.56	32.57

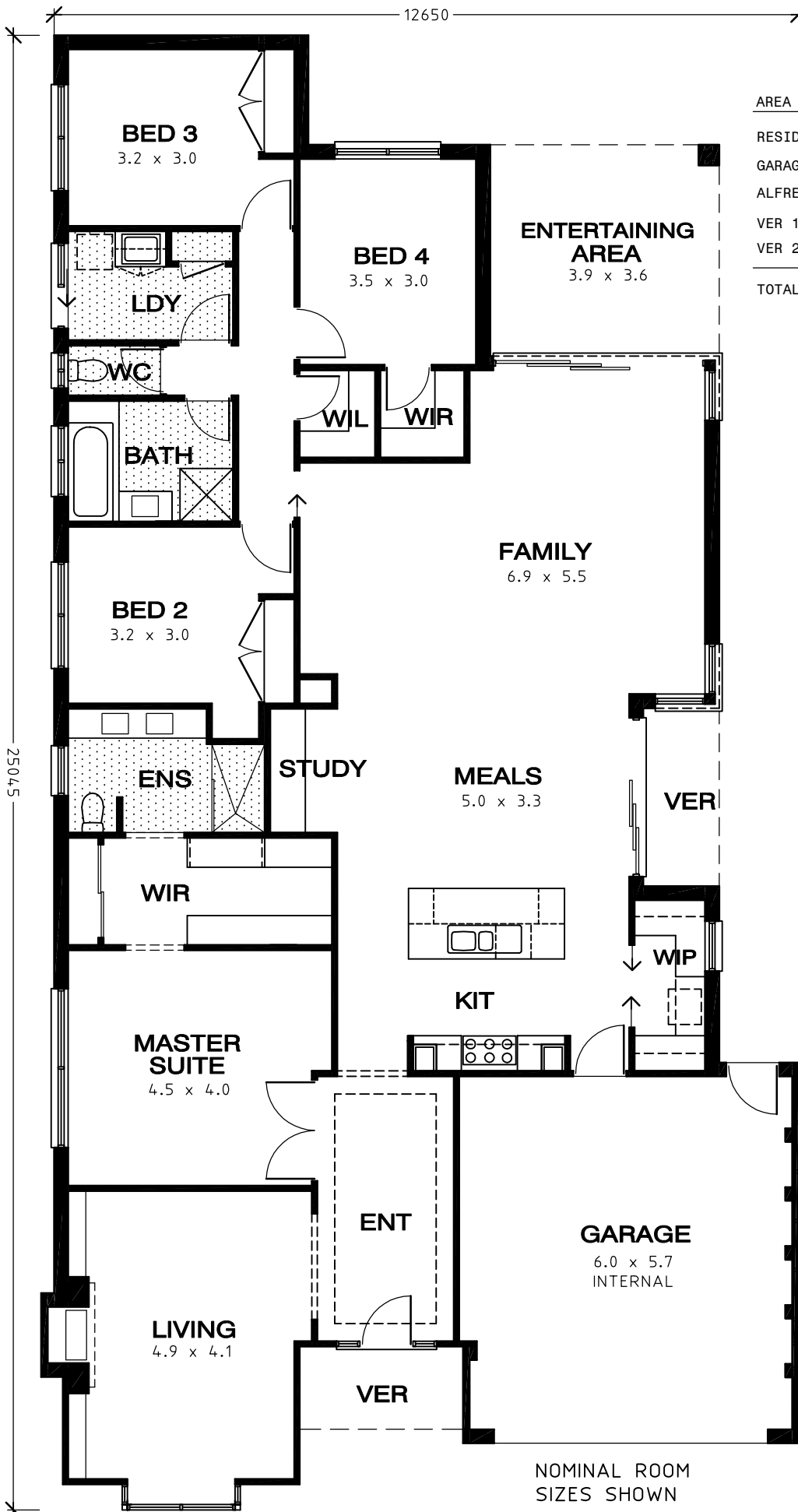


first floor

© This drawing is Copyright. No part may be reproduced without the permissions of Premier Builders Group.

THE CLOVERLEA 289

(Clovelly)



AREA ANALYSIS

RESIDENCE	211.19m ²	-	22.73sq
GARAGE	36.14m ²	-	3.89sq
ALFRESCO	13.96m ²	-	1.50sq
VER 1	3.90m ²	-	0.42sq
VER 2	3.90m ²	-	0.42sq
TOTAL AREA	269.09m²	-	28.96sq

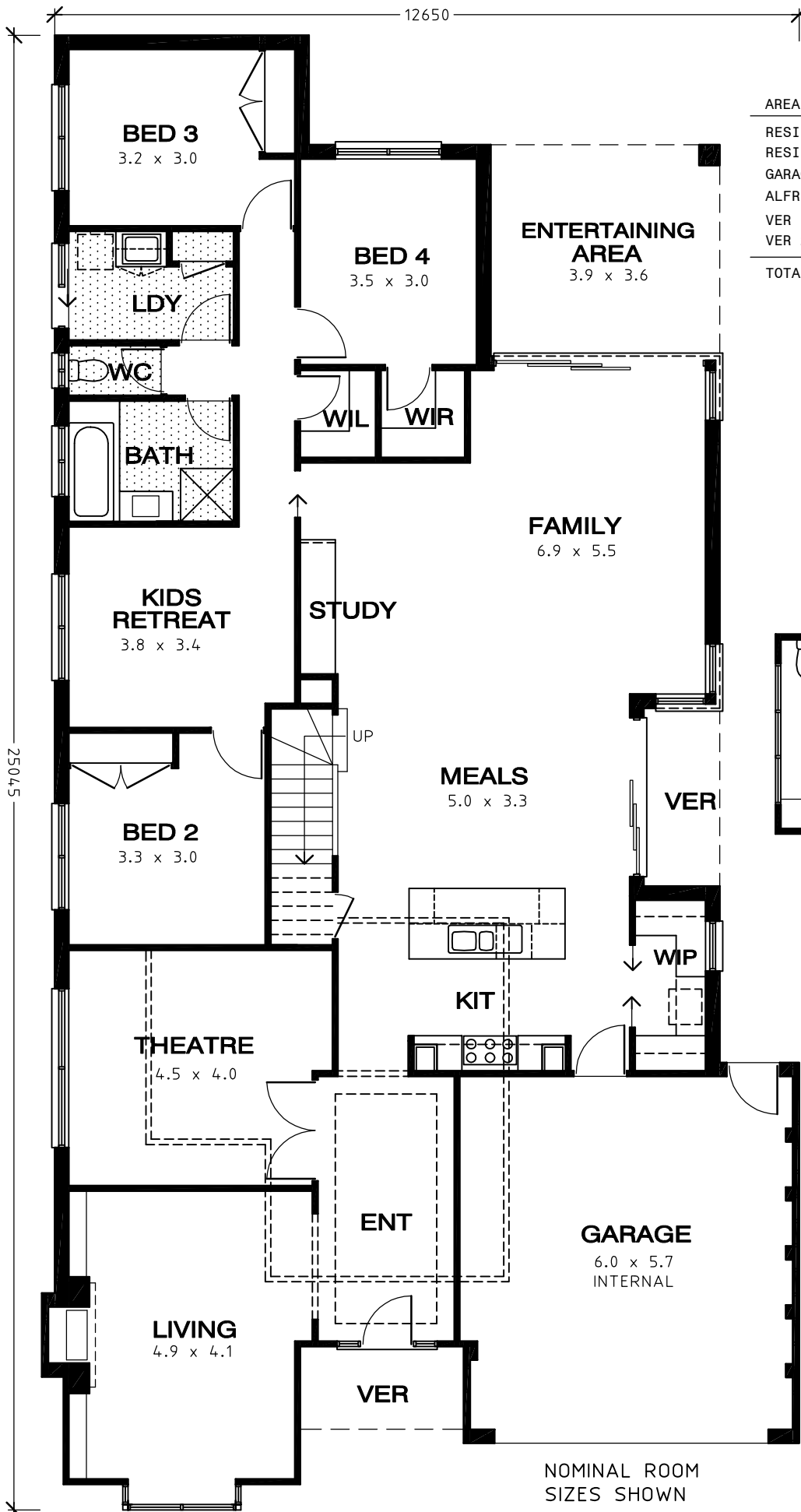
1 : 100

NOMINAL ROOM SIZES SHOWN

plan

THE CLOVERLEA 324

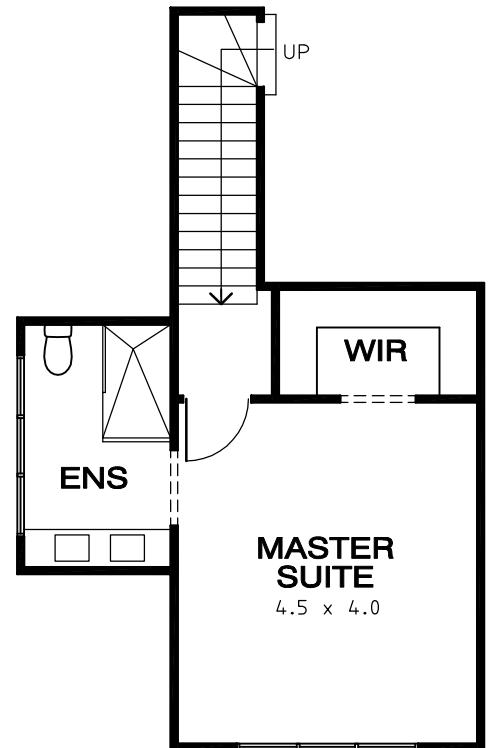
(Clovelly)



AREA ANALYSIS

RESIDENCE - LOWER	211.19m ²	-	22.73sq
RESIDENCE - UPPER	32.47m ²	-	3.49sq
GARAGE	36.14m ²	-	3.89sq
ALFRESCO	13.96m ²	-	1.50sq
VER 1	3.90m ²	-	0.42sq
VER 2	3.90m ²	-	0.42sq
TOTAL AREA	301.56m²	-	32.45sq

1 : 100



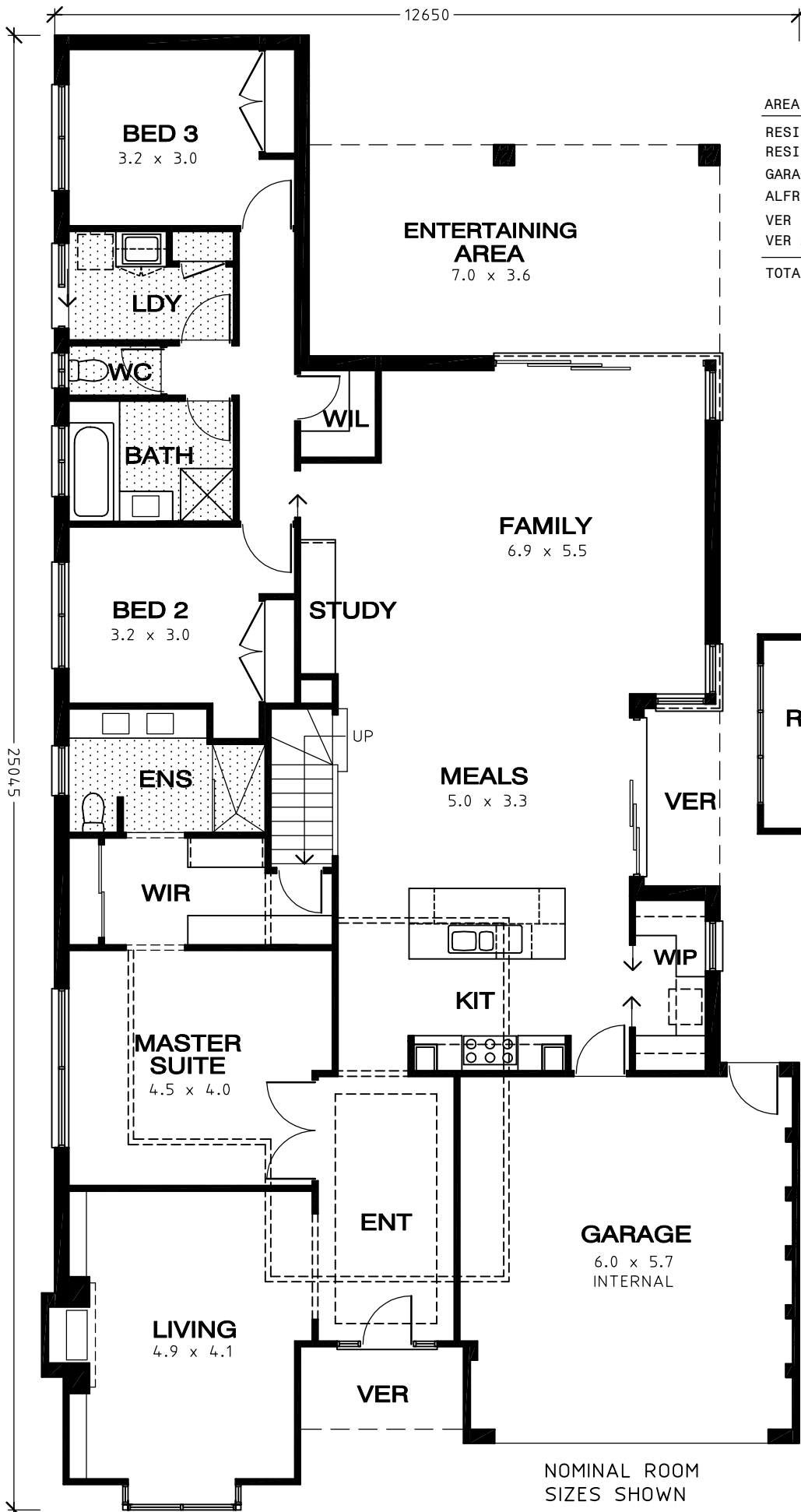
upper plan

lower plan

NOMINAL ROOM SIZES SHOWN

THE CLOVERLEA 325 - 3 beds

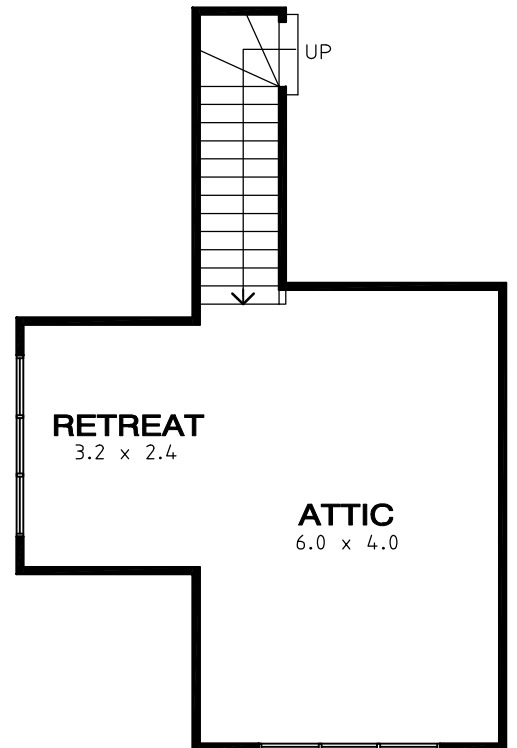
(Clovelly)



AREA ANALYSIS

RESIDENCE - LOWER	200.00m ²	-	21.53sq
RESIDENCE - UPPER	33.48m ²	-	3.60sq
GARAGE	36.14m ²	-	3.89sq
ALFRESCO	25.05m ²	-	2.70sq
VER 1	3.90m ²	-	0.42sq
VER 2	3.90m ²	-	0.42sq
TOTAL AREA	302.56m²	-	32.57sq

1 : 100



upper plan

lower plan

NOMINAL ROOM SIZES SHOWN